

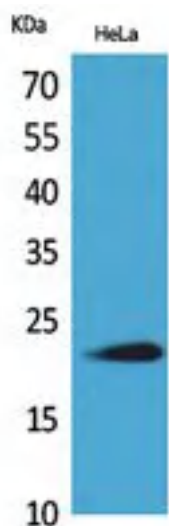


IFN- ω Polyclonal Antibody

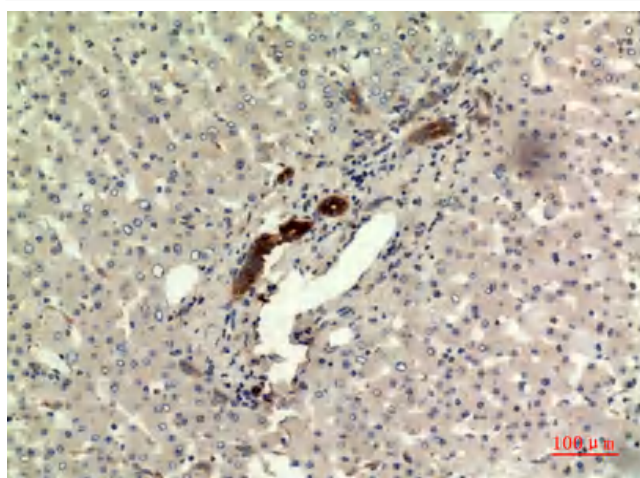
Catalog No	YP-Ab-16035
Isotype	IgG
Reactivity	Human;Rat;Mouse;
Applications	WB;IHC;IF;ELISA
Gene Name	IFNW1
Protein Name	Interferon omega-1
Immunogen	The antiserum was produced against synthesized peptide derived from the C-terminal region of human IFNW1. AA range:146-195
Specificity	IFN- ω Polyclonal Antibody detects endogenous levels of IFN- ω protein.
Formulation	Liquid in PBS containing 50% glycerol, 0.5% BSA and 0.02% sodium azide.
Source	Polyclonal, Rabbit,IgG
Purification	The antibody was affinity-purified from rabbit antiserum by affinity-chromatography using epitope-specific immunogen.
Dilution	WB: 1/500 - 1/2000. IHC-p: 1/100-1/300. ELISA: 1/20000.. IF 1:50-200
Concentration	1 mg/ml
Purity	≥90%
Storage Stability	-20°C/1 year
Synonyms	IFNW1; Interferon omega-1; Interferon alpha-II-1
Observed Band	22kD
Cell Pathway	Secreted.
Tissue Specificity	Leukocyte,Liver,
Function	similarity:Belongs to the alpha/beta interferon family.,
Background	The protein encoded by this gene is an interferon and possesses antiviral activity. The encoded protein binds to the interferon alpha/beta receptor but not to the interferon gamma receptor. This intronless gene has several pseudogenes spread throughout the genome. [provided by RefSeq, Nov 2015],
matters needing attention	Avoid repeated freezing and thawing!
Usage suggestions	This product can be used in immunological reaction related experiments. For more information, please consult technical personnel.



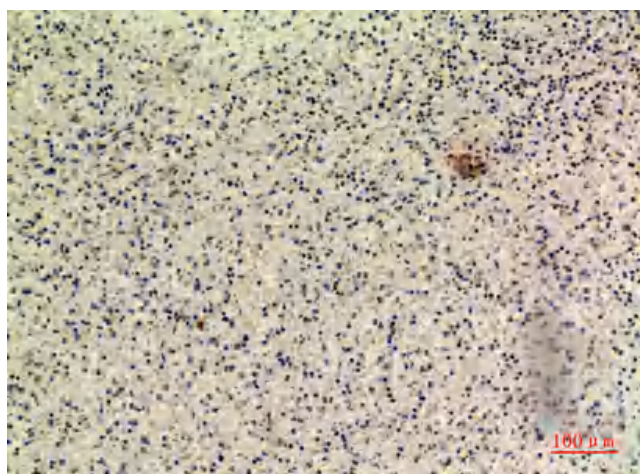
Products Images



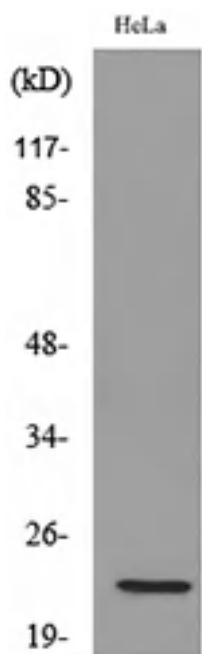
Western Blot analysis of HeLa cells using IFN- ω Polyclonal Antibody. Secondary antibody(catalog#:RS0002) was diluted at 1:20000



Immunohistochemical analysis of paraffin-embedded human-liver, antibody was diluted at 1:100



Immunohistochemical analysis of paraffin-embedded human-spleen, antibody was diluted at 1:100



Western blot analysis of lysate from HeLa cells, using IFNW1 Antibody.